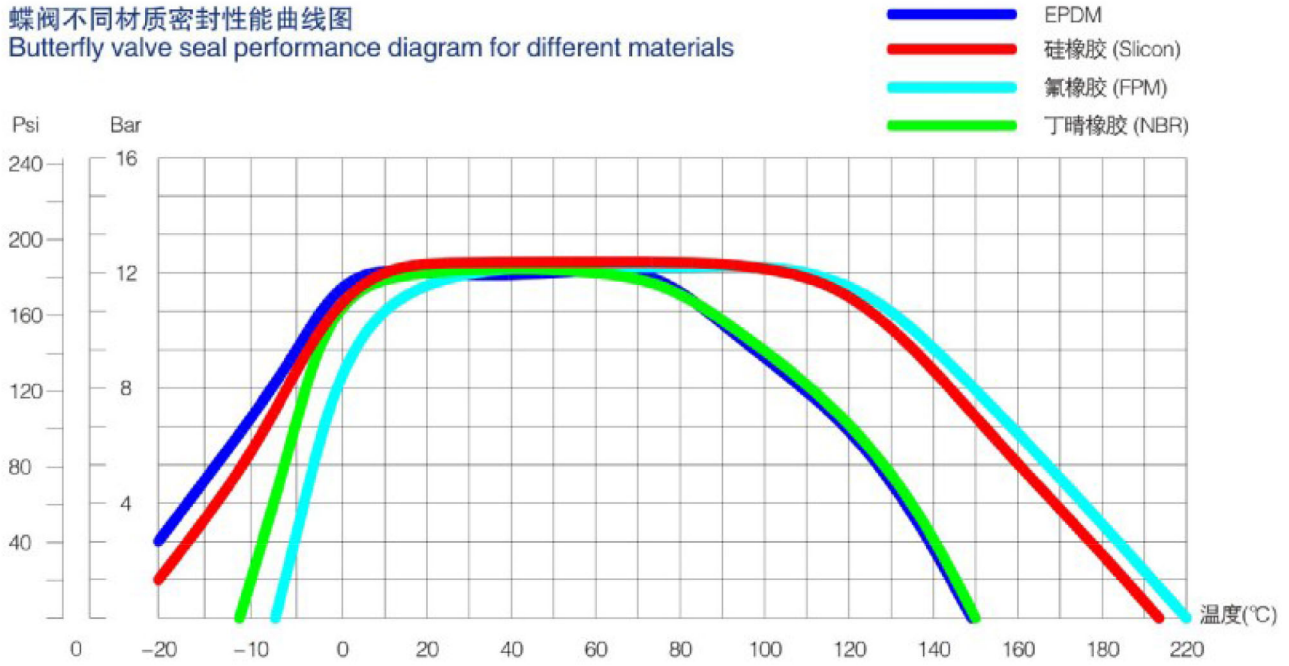




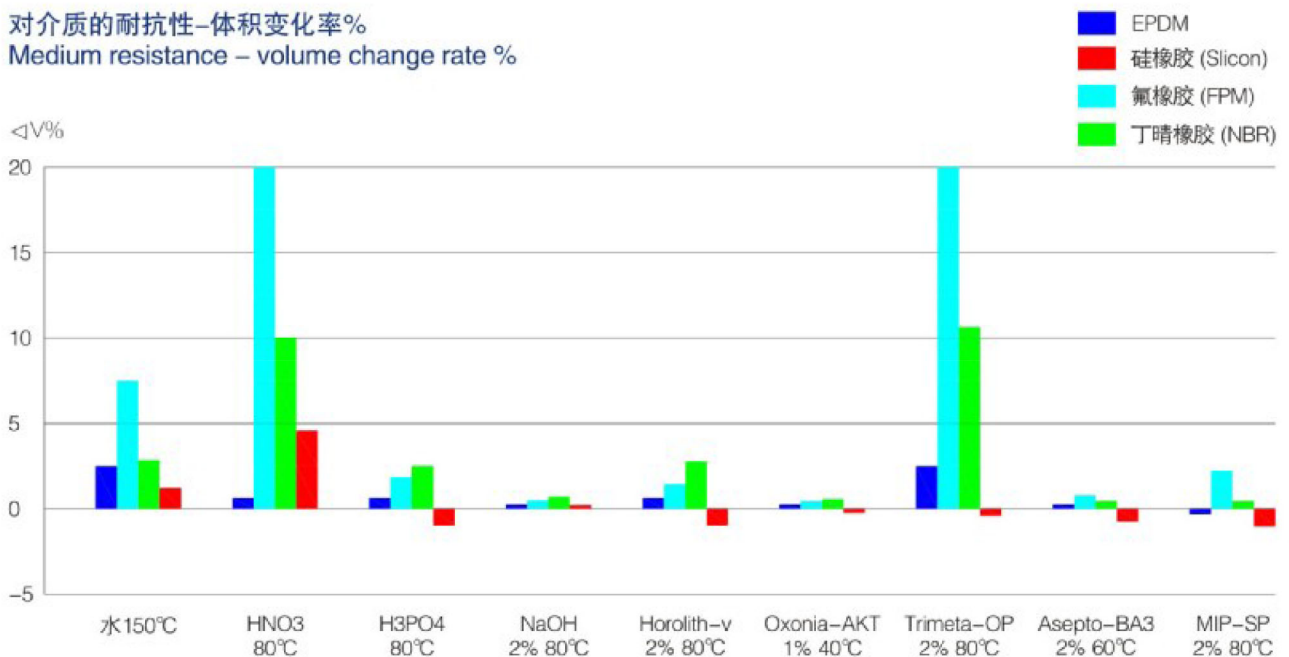
## MSA系列三片式卫生焊接蝶阀 MSA series three-piece sanitary welding butterfly valve

蝶阀不同材质密封性能曲线图  
Butterfly valve seal performance diagram for different materials



说明: 测试条件, 介质水 Test conditions: medium water

对介质的耐抗性-体积变化率%  
Medium resistance – volume change rate %





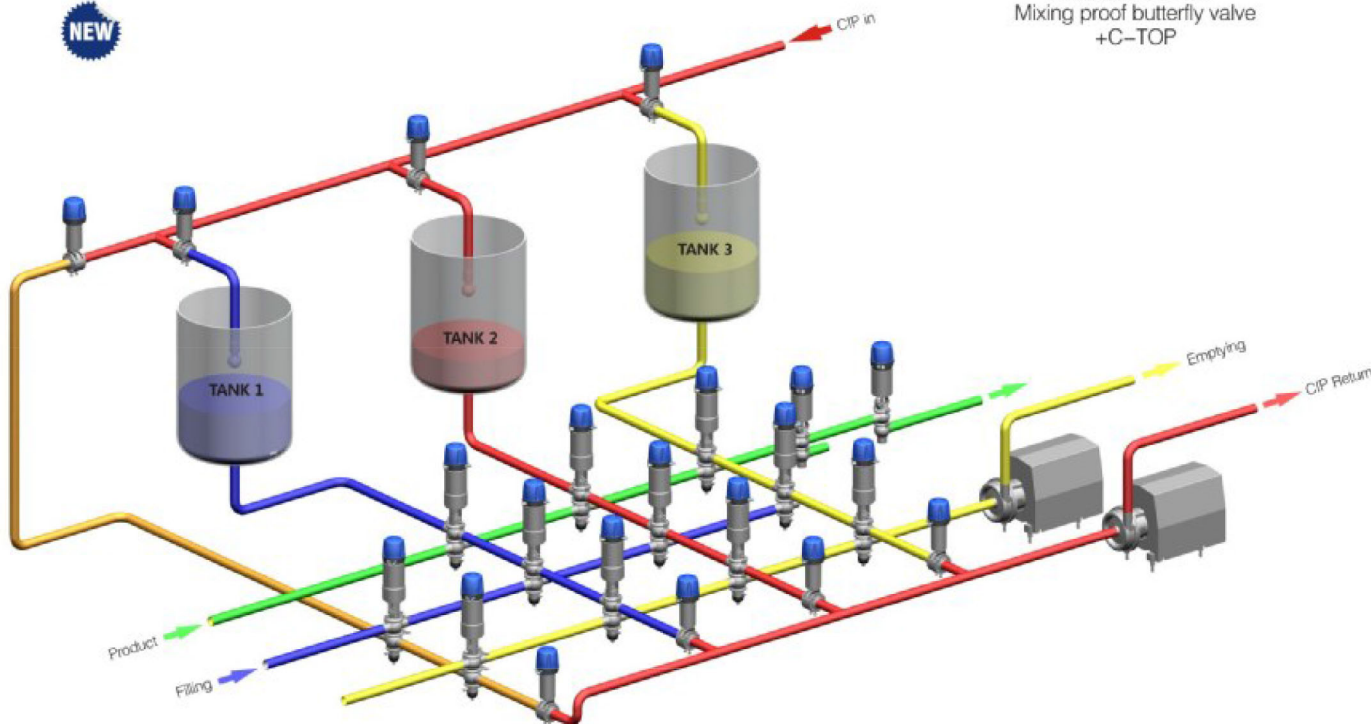
## MSA系列三片式卫生焊接蝶阀 MSA series three-piece sanitary welding butterfly valve

洁净和安全  
一个蝶板二道密封  
泄露看得见  
零的污染风险  
Purity and safety  
One butterfly plate two seal  
Leakage is visible  
Zero risk of contamination



防混蝶阀+C-TOP  
Mixing proof butterfly valve  
+C-TOP

**NEW**





## MSA系列三片式卫生焊接蝶阀

### MSA series three-piece sanitary welding butterfly valve

#### 应用领域

防混蝶阀作为一个分离物料的重要过程广泛用于以下多种应用:

- ◆ CIP清洗系统中, 分离清洗溶液
- ◆ 冲洗过程应用
- ◆ 水源管理应用
- ◆ 部分管路关闭来分离物料
- ◆ CIP/气源管理应用(酿酒)
- ◆ 储罐物料分离/CIP
- ◆ 作为在阀矩阵里的CIP回流阀
- ◆ 尤其适用于液体和无悬浮物/颗粒的气体介质。

DN15-DN200 1/2"-8"

#### 技术规格

规格: DN15-DN200, 1/2"-8"  
 材质: 1.4404/1.4301, 304/316L  
 最高温度: -10°C-130°C  
 最大压力: 10bar  
 操作方式: 气动/手动可互换  
 控制盒: C-TOP基本型, C-TOP+AS-I通讯  
 密封圈: EPDM(标准)FPM/SILICON/NBR, FDA177.2600

#### Application

The mixproof butterfly valve as a process element for the separation of media is suitable for a variety of applications:

- ◆ In CIP systems, for separating CIP media
- ◆ In flush-out processes
- ◆ In water management
- ◆ As pipe section shut-off valve for separating media
- ◆ In CIP/gas management (breweries)
- ◆ At storage tanks for separating product/CIP
- ◆ As CIP return valve in a valve matrix
- ◆ Preferably suitable for liquid and gaseous media without suspended matter/particles.

#### Technical specifications

Size: DN15-DN200, 1/2"-8"  
 Material: 1.4404/1.4301, 304/316L  
 Max temperature: -10°C - 130°C  
 Max pressure: 10bar  
 Operation: pneumatic/manual interchangeable  
 Control box: C-TOP basic, C-TOP+AS-I communication  
 Seal: EPDM (standard) FPM/SILICON/NBR, FDA177.2600

